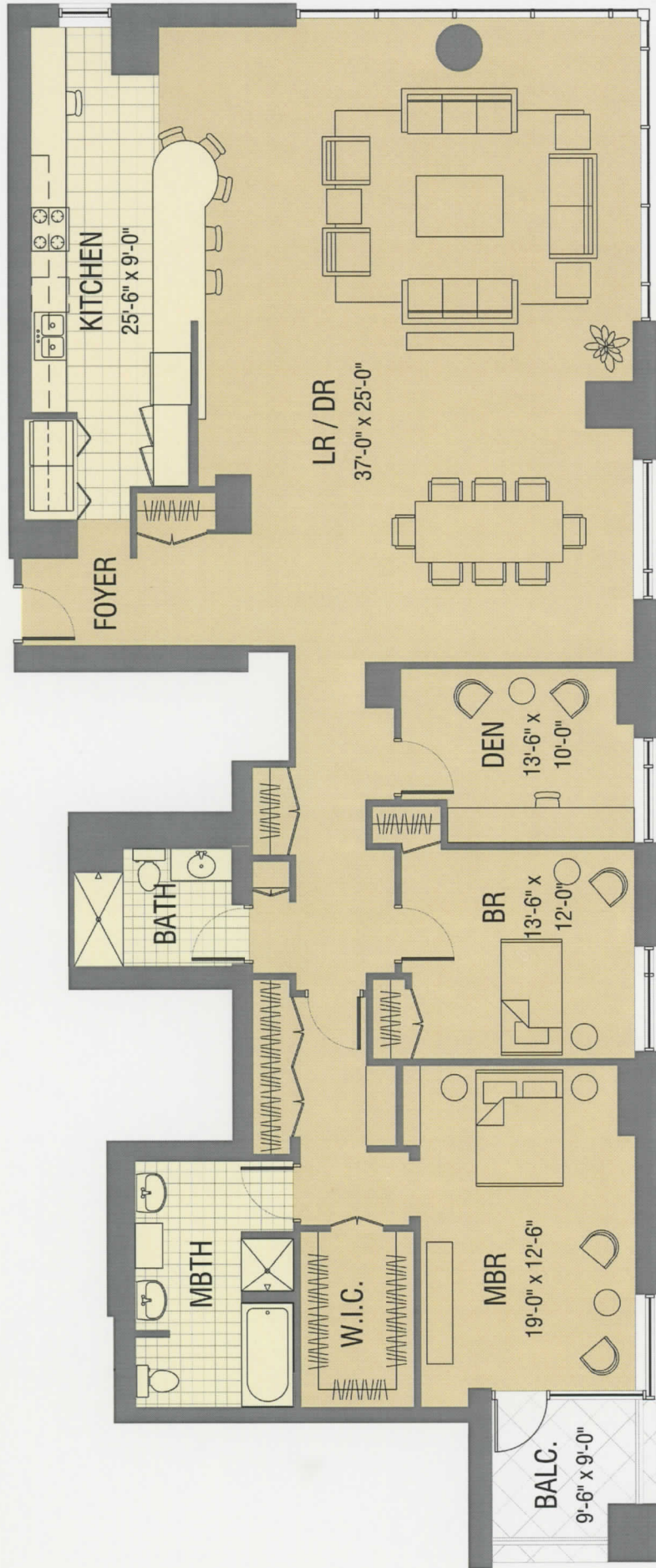
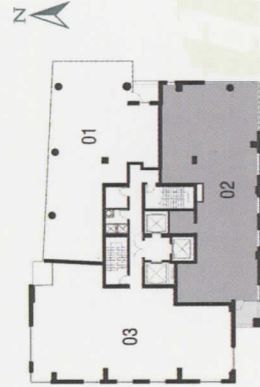


KILBOURN TOWER TYPICAL THREE UNIT PER FLOOR 02 UNIT



**TWO BEDROOM TWO BATH
2,495 SQUARE FEET**

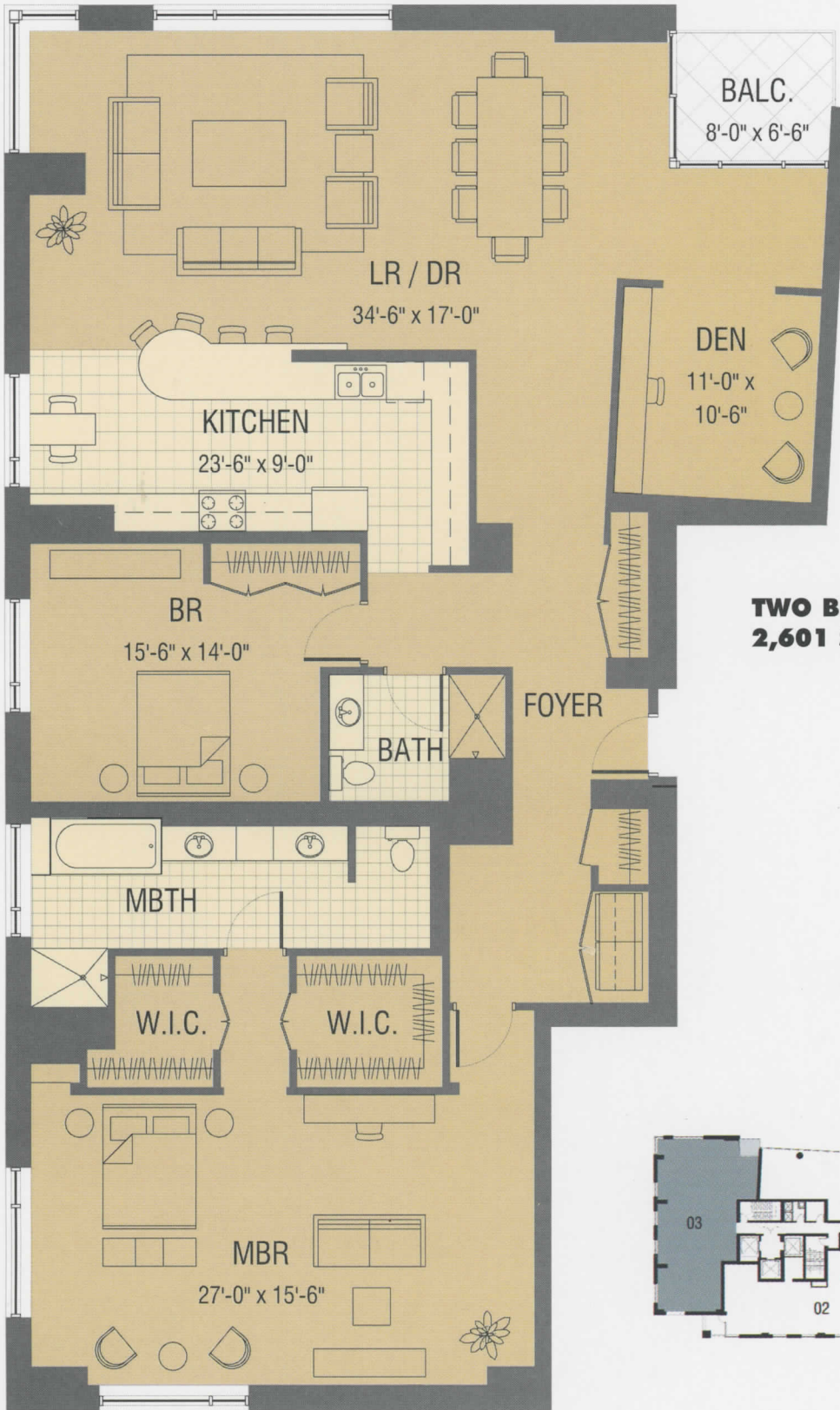


three

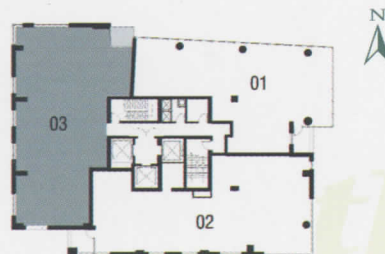


Fiduciary Real Estate Development, Inc.
225 EAST MASON STREET, SUITE 700, MILWAUKEE, WISCONSIN 53202
TELEPHONE 414-226-4535, FAX 414-431-4845

All dimensions are approximate. Plans, materials and specifications are subject to architectural, structural and other revisions as they are deemed necessary by the developer, builder or architect, or as may be required by law.



**TWO BEDROOM TWO BATH
2,601 SQUARE FEET**



Fiduciary Real Estate Development, Inc.
225 EAST MASON STREET, SUITE 900, MILWAUKEE, WISCONSIN 53202
ELLEN WILDE, DIRECTOR OF SALES
TELEPHONE 414-226-4535 EXT 165, FAX 414-226-4528

All dimensions are approximate. Plans, materials and specifications are subject to architectural, structural and other revisions as they are deemed necessary by the developer, builder or architect, or as may be required by law.