

VIEWS OF LAKE MICHIGAN

Patio doors with transom light above that create a 15 foot wide x 10 foot tall glass wall

The living room/home theatre is large enough to accommodate a very large screen high definition TV and is pre-wired for a surround sound system.

Units come equipped with a black-out drupe and a drapery pocket that can accommodate a sheer drupe, allowing one to darken the room and utilize it as a home theater.

The unique kitchen features a large U-shaped dining/entertainment counter that is configured so that:

- People can interact with each other.
- A full newspaper can be spread out.
- Everybody is involved with the cooking - great for parties!

Wood cabinets with glass panels on the upper cabinets

All of The Harbor Front's units incorporate very high quality finishes and features throughout and careful thought has been put into the details, i.e.:

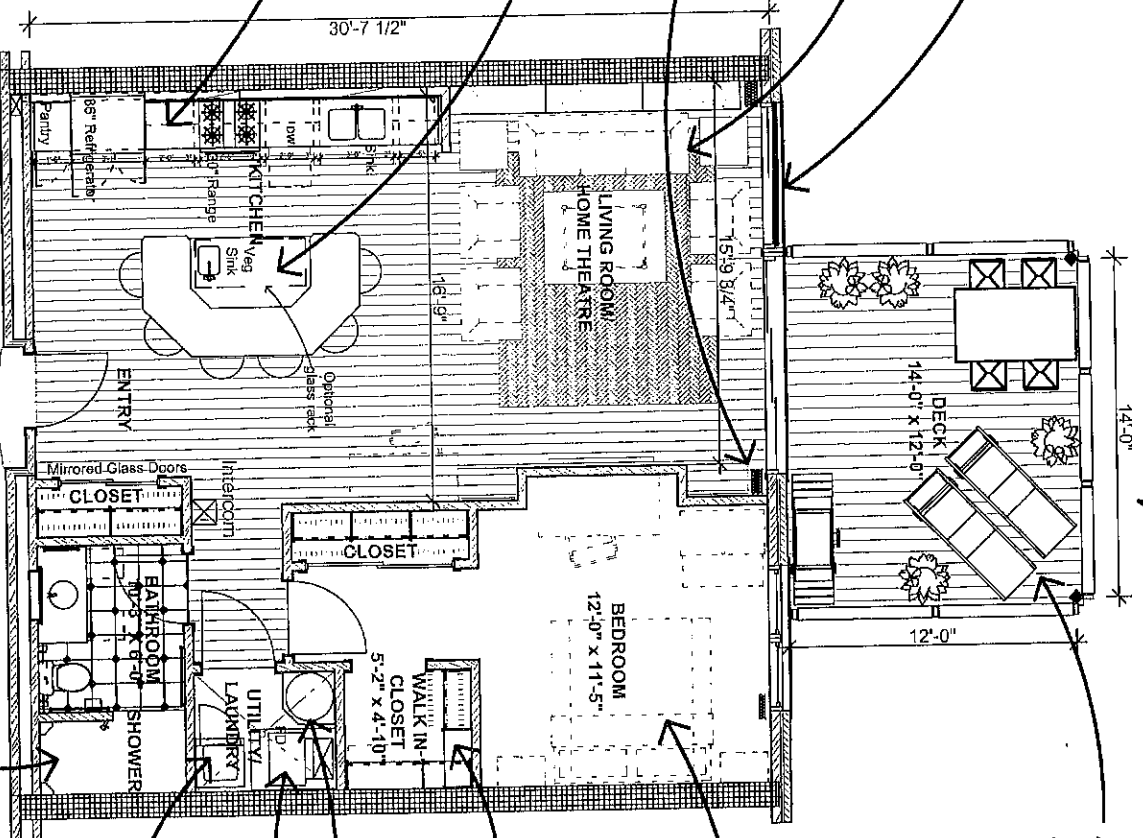
- Heavy timber ceilings in all the living spaces with the underside of the decking at about 10'-10"
- High quality cabinets with granite countertops and carefully thought out low voltage lighting.
- There are eight different interior design packages to select from
- Real 3/4" thick hardwood maple flooring
- Rustic 1-3/4" hardwood maple panel doors.
- Carefully detailed rustic maple wood trim throughout, including a 8" three-piece base and door casings with back bands.
- Extensive track lighting throughout the unit allows the owner to set the right mood.

Units are acoustically isolated from each other by virtue of 12" poured in place concrete walls separating units and an extensive floor to floor isolation system that includes 12" concrete plank.

Units include large expanses of low-E glass- clear in appearance while at the same time highly energy efficient and comfortable. In addition, low-E glass almost eliminates any possible fading from ultra violet light. Windows are single hung, cleanable from the interior.

CORRIDOR

Entrance



All the units at The Harbor Front feature a large wood deck that can accommodate a dining table, two deck chairs, gas fired grill, and planters. The decks are constructed from galvanized steel and ironwood decking- wood that looks like mahogany but wears like iron. The deck rails are infilled with tempered glass maximizing visibility while at the same time blocking the wind and expanding the season. The decks include an internal drainage system, a water connection, electrical connections, gas connection, and last but not least, fabulous views

This bedroom is large enough to accommodate a king size bed and a dresser and features large double hung windows

Walk-in closet with three levels of storage space, allowing off season clothing storage on the top tier.

Hot water heater

High efficiency variable air volume heating, ventilating and air conditioning unit with air filtration system

Stacked washer and dryer

The bathroom includes a large approximately three foot by six foot shower marble lined from floor to ceiling.

UNIT 312,412,512,612

One Bedroom

One Bath Lake View Loft Unit

941 SQ. FT. PLUS 168 SQ. FT.

DECK= 1,109 SQ. FT.

RENNER
A development by
CRCF
830 North 23rd Street, Milwaukee, WI 53202
(414) 272-6588
Construction at Harbor Front

The Harbor Front
80 Loft Condominiums at the Best Waterfront site in Milwaukee
Located at 601 E. Erie Street, Milwaukee, WI in the Historic Third Ward (414) 727-1150, Fax:(414) 727-2312

www.waterfront-condominiums.com

This document is for illustrative purposes only and is subject to errors, omissions, corrections and changes without prior notice.