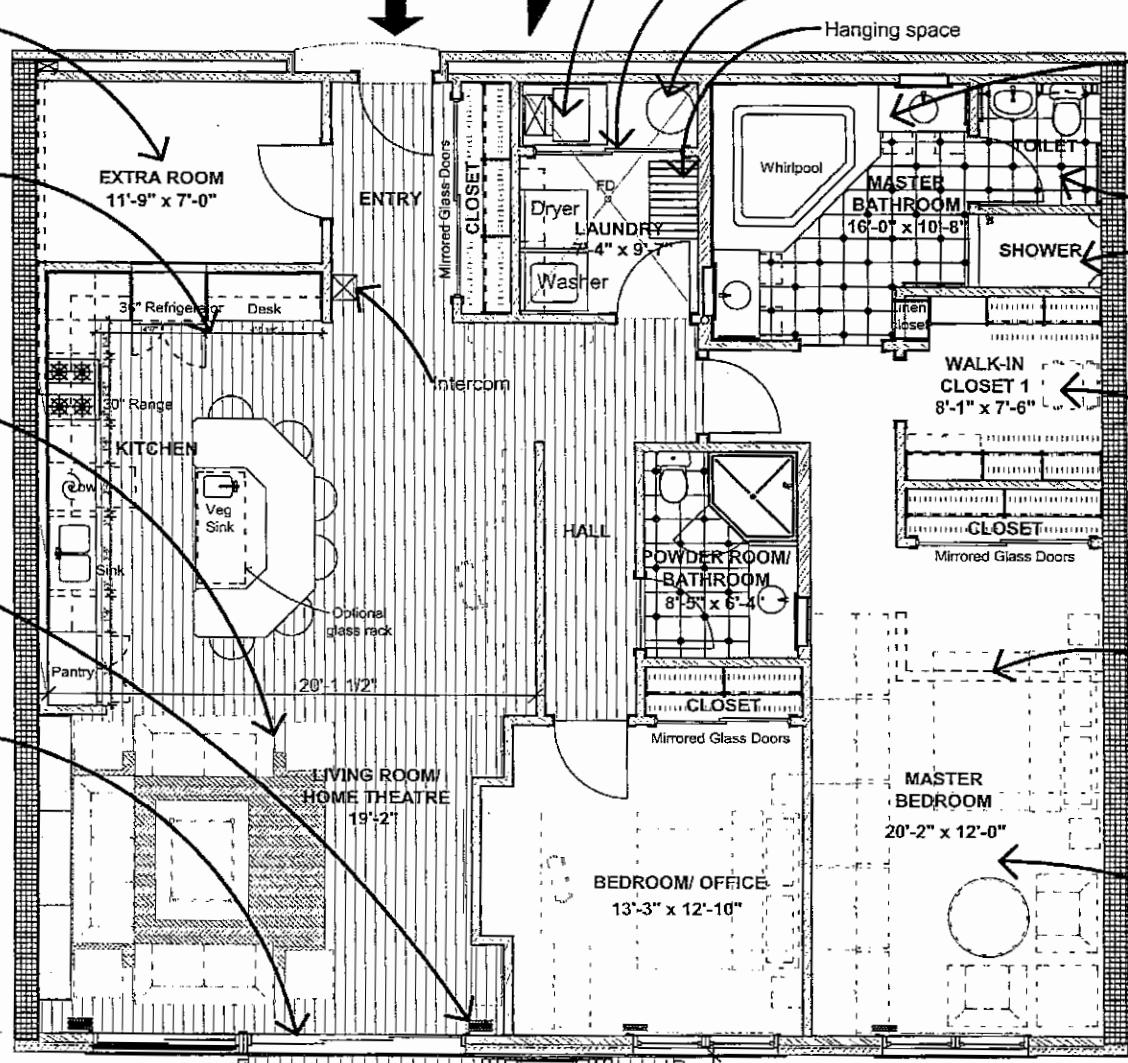


**CORRIDOR**



**MILWAUKEE RIVER BELOW**

Extra room- can be used for storage, or a hobby room, or an office

The unique kitchen features a large U-shaped dining/entertainment counter that is configured so that:  
 - People can interact with each other.  
 - A full newspaper can be spread out.  
 - Everybody is involved with the cooking - great for parties!

The living room/ home theatre is large enough to accommodate a very large screen high definition TV and is pre-wired for a surround sound system.

Units come equipped with a black-out drape and a drapery pocket that can accommodate a shear drape, allowing one to darken the room and utilize it as a home theater.

Patio doors with transom light above that create a 15 foot wide x 10 foot tall glass wall

All of The Harbor Front's units incorporate very high quality finishes and features throughout and careful thought has been put into the details, i.e.:

- Heavy timber ceilings in all the living spaces with the underside of the decking at about 10'-10".
- High quality cabinets with granite countertops and carefully thought out low voltage lighting.
- There are eight different interior design packages to select from
- Real 3/4" thick hardwood maple flooring
- Rustic 1-3/4" hardwood maple panel doors.
- Carefully detailed rustic maple wood trim throughout, including a 8" three-piece base and door casings with back bands.
- Extensive track lighting throughout the unit allows the owner to set the right mood.

Units are acoustically isolated from each other by virtue of 12" poured in place concrete walls separating units and an extensive floor to floor isolation system that includes 12" concrete plank.

Units include large expanses of low-E glass- clear in appearance while at the same time highly energy efficient and comfortable. In addition, low-E glass almost eliminates any possible fading from ultra violet light. Windows are single hung, cleanable from the interior.

High efficiency variable air volume heating, ventilating and air conditioning unit with air filtration system

Sliding louver doors

Hot water heater

Hanging space

Oversized marble master bathroom with his and hers vanities, oversized medicine cabinets, and a whirlpool bath

Master bath toilet room with a toilet and lavatory

The master bath includes a large approximately three foot by five foot shower marble lined from floor to ceiling.

Large walk-in closet/ dressing area with three levels of storage space, allowing off season clothing storage on the top tier.

Optional second walk-in closet (would reduce the master bedroom to 14'-6" x 12'-0")

Master bedroom large enough to accommodate a king size bed, all the dressers you can imaginably want, and an informal seating area.

All the units at The Harbor Front feature a large wood deck that can accommodate a dining table, two deck chairs, gas fired grill, and planters. The decks are constructed from galvanized steel and ironwood decking-wood that looks like mahogany but wears like iron. The deck rails are infilled with tempered glass maximizing visibility while at the same time blocking the wind and expanding the season. The decks include an internal drainage system, a water connection, electrical connections, gas connection, and last but not least, fabulous views

**UNIT 211,311,411,511,611**

**SIMILAR UNITS: 203, 303,**

**403, 503, 603**

**Large Two Bedroom**

**Two Bath Loft Unit**

**1,823 SQ. FT. PLUS 204 SQ. FT.**

**DECK = 2,027 SQ. FT.**

**C**

A development by  
**RENNER**  
 architects  
 525 North Water Street, Milwaukee, WI 53202  
 (414) 273-8637 fax:(414) 273-8938  
 Copyright©2003 All Rights Reserved

**The Harbor Front**  
 80 Loft Condominiums at the Best Waterfront site in Milwaukee  
 Located at 601 E. Erie Street, Milwaukee, WI in the Historic Third Ward (414) 727-1150, Fax:(414) 727-2312

This document is for illustrative purposes only and is subject to errors, omissions, corrections and changes without prior notice.

[www.waterfront-condominiums.com](http://www.waterfront-condominiums.com)

Date:06-04-2003