

TYPICAL FLOOR
Floors 3, 4, 5, and 6

The unique kitchen features a large U-shaped dining/entertainment counter that is configured so that:

- People can interact with each other.
- A full newspaper can be spread out.
- Everybody is involved with the cooking - great for parties!

Wood cabinets with glass panels on the upper cabinets

High efficiency variable air volume heating, ventilating and air conditioning unit with air filtration system

Oversized marble master bedroom with his and hers vanities, oversized medicine cabinets, and a whirlpool bath

Master bath toilet room with a toilet and lavatory

The master bath includes a large approximately three foot by five foot shower marble lined from floor to ceiling.

Large walk-in closet/dressing area with three levels of storage space, allowing off season clothing storage on the top tier.

Optional second walk-in closet (would reduce the master bedroom to 14'-6" x 16'-0")

Master bedroom large enough to accommodate a king size bed, all the dressers you can imaginably want, and an informal seating area.

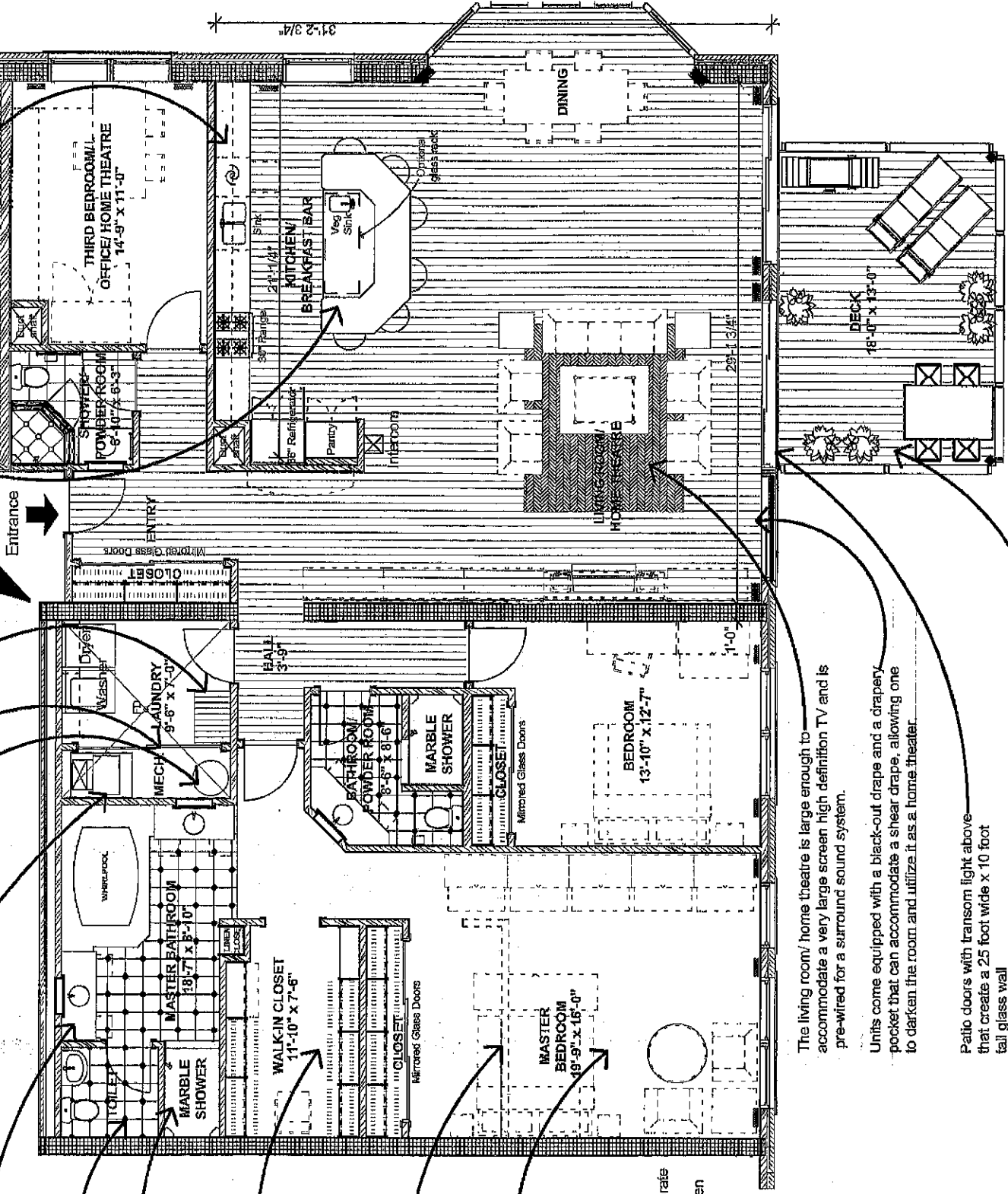
All of Hansen's Landing's units incorporate very high quality finishes and features throughout and careful thought has been put into the details, i.e.:

- Heavy timber ceilings in all the living spaces with the underside of the decking at about 10'-10".
- High quality cabinets with granite countertops and carefully thought out low voltage lighting.
- There are eight different interior design packages to select from
- Real 3/4" thick hardwood maple flooring
- Rustic 1-3/4" hardwood maple panel doors.
- Carefully detailed rustic maple wood trim throughout, including a 6" three-piece base and door casings with back bands.
- Extensive track lighting throughout the unit allows the owner to set the right mood.
- Units are acoustically isolated from each other by virtue of 12" poured in place concrete walls separating units and an extensive floor to floor isolation system that includes 12" concrete plank.
- Units include large expanses of low-E glass-clear in appearance while at the same time highly energy efficient and comfortable. In addition, low-E glass almost eliminates any possible fading from ultra violet light. Windows are single hung, cleanable from the interior.

CORRIDOR

Hanging space
Sliding louver doors
Hot water heater

ENTRANCE



The living room/home theatre is large enough to accommodate a very large screen high definition TV and is pre-wired for a surround sound system.

Units come equipped with a black-out drapes and a drapery pocket that can accommodate a sheer drape, allowing one to darken the room and utilize it as a home theater.

Patio doors with transom light above that create a 25 foot wide x 10 foot tall glass wall

All the units at Hansen's Landing feature a large wood deck that can accommodate a dining table, two deck chairs, gas fired grill, and planters. The decks are constructed from galvanized steel and ironwood decking- wood that looks like mahogany, but wears like iron. The deck rails are filled with tempered glass maximizing visibility while at the same time blocking the wind and expanding the season. The decks include an internal drainage system, a water connection, electrical connections, gas connection, and last but not least, fabulous views

UNIT 317, 417, 517, 617
Large Three Bedroom
Three Bath Corner Loft Unit
2,551 SQ. FT. PLUS 234 SQ. FT.
DECK = 2,785 SQ. FT.

MILWAUKEE RIVER BELOW

A development by
RENNER
a r e n n e r
625 North Water Street, Milwaukee, WI 53202
(414) 225-8837 Fax: (414) 275-6600
Copyright © 2004 Renner

Hansen's Landing
555 E. Erie Street, Milwaukee, WI, (414) 727-1150, Fax: (414) 727-2312

www.waterfront-condominiums.com

This document is for illustrative purposes only and is subject to errors, omissions, corrections and changes without prior notice.

www.waterfront-condominiums.com
DATE: 05-2004